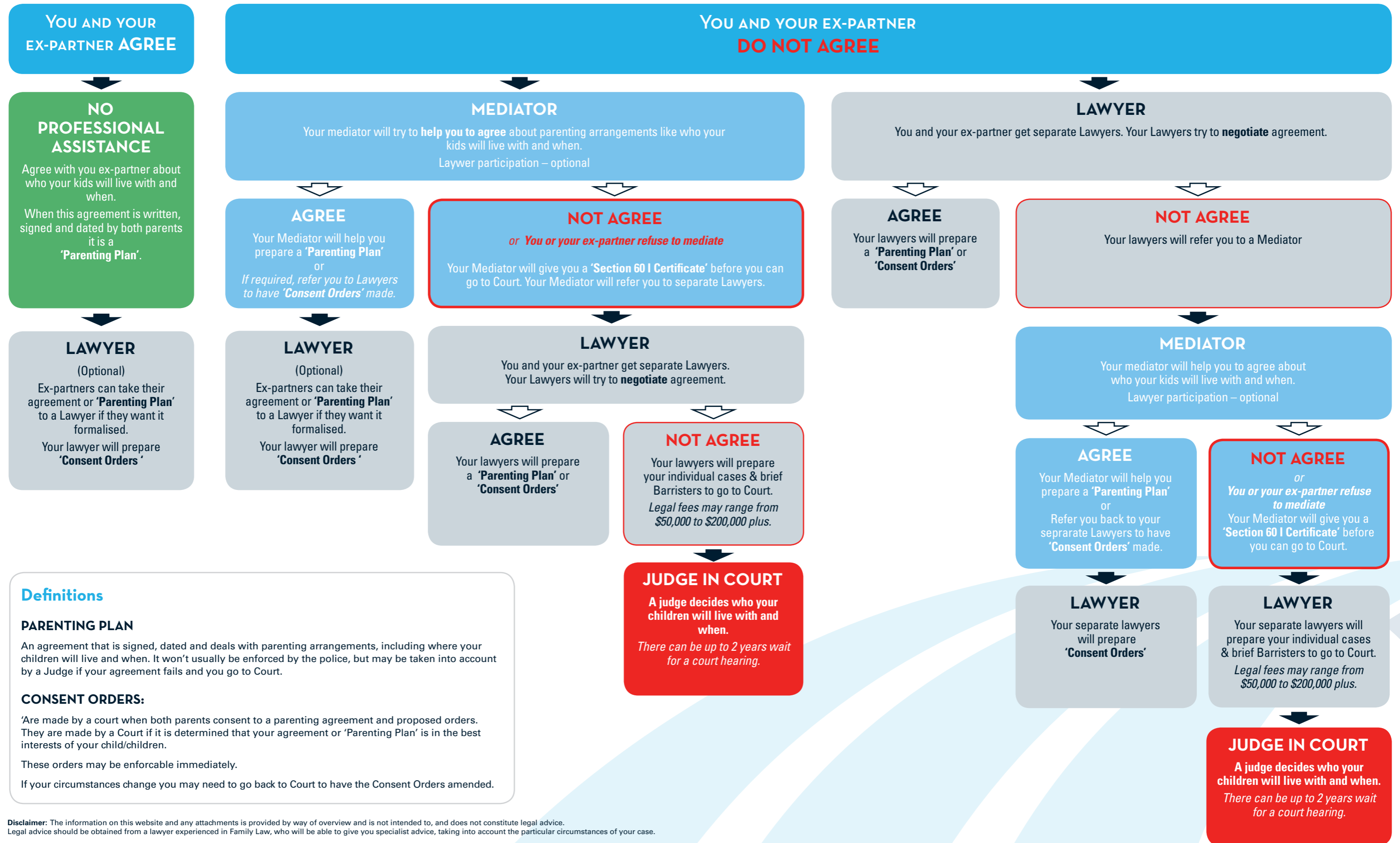


# FAMILY SEPARATION PROCESS

## PARENTING: PROCESS FOR PARENTING DECISIONS, INCLUDING WHERE YOUR CHILDREN WILL LIVE AND WHEN



**Definitions**

**PARENTING PLAN**  
An agreement that is signed, dated and deals with parenting arrangements, including where your children will live and when. It won't usually be enforced by the police, but may be taken into account by a Judge if your agreement fails and you go to Court.

**CONSENT ORDERS:**  
'Are made by a court when both parents consent to a parenting agreement and proposed orders. They are made by a Court if it is determined that your agreement or 'Parenting Plan' is in the best interests of your child/children.  
These orders may be enforceable immediately.  
If your circumstances change you may need to go back to Court to have the Consent Orders amended.

Disclaimer: The information on this website and any attachments is provided by way of overview and is not intended to, and does not constitute legal advice. Legal advice should be obtained from a lawyer experienced in Family Law, who will be able to give you specialist advice, taking into account the particular circumstances of your case.